

**SDHB Antibody**  
**Mouse Monoclonal Antibody (Mab)**  
**Catalog # AD80307****Specification**

---

**SDHB Antibody - Product info**

Application	IHC
Primary Accession	<a href="#">P21912</a>
Reactivity	Human
Host	Mouse
Clonality	Monoclonal
Calculated MW	31630

**SDHB Antibody - Additional info**

Gene ID	6390
Gene Name	SDHB
<b>Other Names</b>	
Succinate dehydrogenase [ubiquinone] iron-sulfur subunit, mitochondrial, 1.3.5.1, Iron-sulfur subunit of complex II, Ip, SDHB, SDH, SDH1	

**Dilution**

IHC~~Ready-to-use

**Storage**

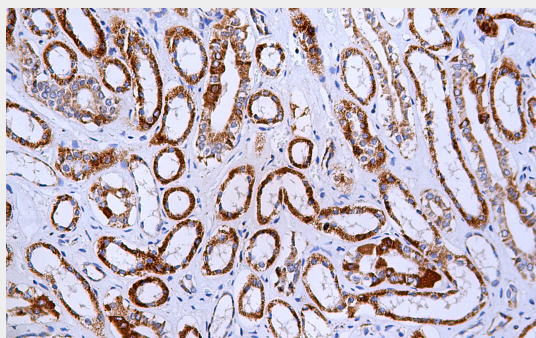
Maintain refrigerated at 2-8°C

**Precautions****SDHB Antibody is for research use only and not for use in diagnostic or therapeutic procedures.****SDHB Antibody - Protein Information****Name** SDHB**Synonyms****Function****SDH, SDH1****Iron-sulfur protein (IP) subunit of succinate dehydrogenase (SDH) that is involved in complex II of the mitochondrial electron transport chain and is responsible for transferring electrons from succinate to ubiquinone (coenzyme Q).****Cellular Location****Mitochondrion inner membrane; Peripheral membrane protein; Matrix side****SDHB Antibody - Protocols**

Provided below are standard protocols that you may find useful for product applications.

- [Western Blot](#)
- [Blocking Peptides](#)
- [Dot Blot](#)
- [Immunohistochemistry](#)
- [Immunofluorescence](#)
- [Immunoprecipitation](#)
- [Flow Cytometry](#)
- [Cell Culture](#)

#### **SDHB Antibody - Images**



Immunohistochemical analysis of paraffin-embedded human kidney tissue using AD80271 performed on the Abcarta® FAIP-30 Fully automated IHC platform. Tissue was fixed with formaldehyde at room temperature, antigen retrieval was by heat mediation with a Citrate buffer (pH6.0). Samples were incubated with primary antibody (Ready-to-use) for 15 min at room temperature. AmpSee™ Detection Systems [Abcepta:AR005] was used as the secondary antibody.